

RÜCKSCHLAGKLAPPE - DOPPELEXZENTRISCH

TYPE 5/110-F14

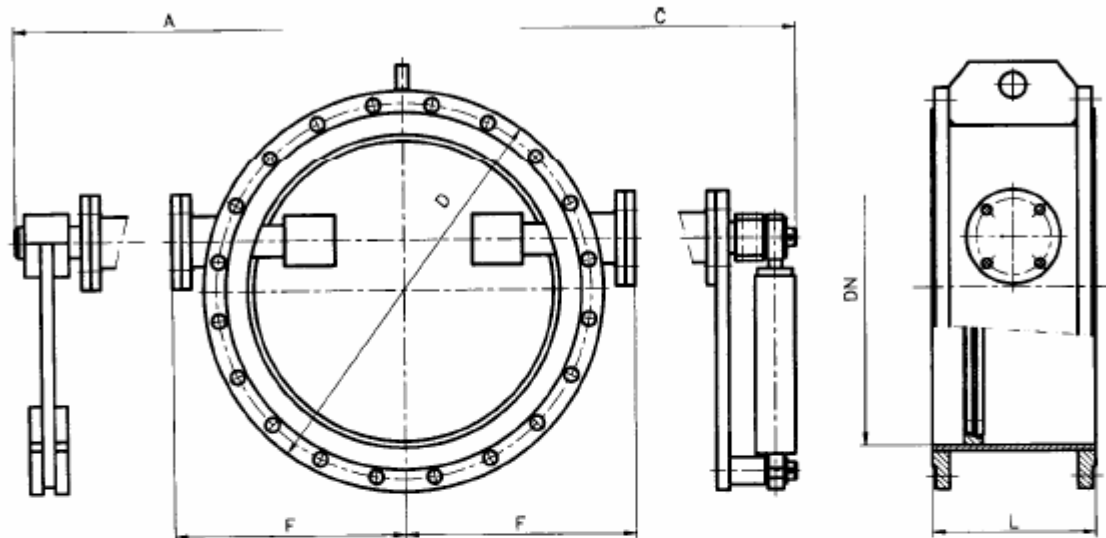
mit Flanschen, Baulänge EN558-1 Reihe 14

PN 1-40

BUTTERFLY CHECK VALVE - DOUBLE ECCENTRIC

flange type, face to face EN558-1 row 14

| | | | |
|--------------|---|---------------|---|
| Ausführung: | Gemäß DIN3354 Gehäuse Stahl geschweißt | design: | according to DIN3354 welded body |
| Baulänge: | EN558-1, Reihe 14 | face to face: | EN558-1, row 14 |
| Flanschen: | DIN2501 | flanges: | DIN2501 |
| Dichtleiste: | DIN2526, Form C | facing: | DIN2526, face C |
| Option: | Hebel mit Gewicht, hydr. Dämpfung | option: | lever with counter-weight, hydr. damper |



Abmessungen / Dimensions ¹⁾

| DN | L | PN 1-2,5 | | | | PN 6 | | | | PN 10 | | | |
|------|-------------------|----------|------|---|------|------|------|---|------|-------|------|---|------|
| | | F | D | - | [kg] | F | D | - | [kg] | F | D | - | [kg] |
| 80 | 180 | 150 | 190 | - | | 150 | 190 | - | | 165 | 200 | - | |
| 100 | 190 | 160 | 210 | - | | 160 | 210 | - | | 175 | 220 | - | |
| 125 | 200 | 175 | 240 | - | | 175 | 240 | - | | 190 | 250 | - | |
| 150 | 210 | 190 | 265 | - | | 190 | 265 | - | | 205 | 285 | - | |
| 200 | 230 | 215 | 320 | - | | 225 | 320 | - | | 235 | 340 | - | |
| 250 | 250 | 245 | 375 | - | | 255 | 375 | - | | 270 | 395 | - | |
| 300 | 270 | 275 | 440 | - | | 285 | 440 | - | | 295 | 445 | - | |
| 350 | 290 | 310 | 490 | - | | 310 | 490 | - | | 325 | 505 | - | |
| 400 | 310 | 335 | 540 | - | | 335 | 540 | - | | 355 | 565 | - | |
| 450 | 330 | 360 | 595 | - | | 370 | 595 | - | | 380 | 615 | - | |
| 500 | 350 | 385 | 645 | - | | 395 | 645 | - | | 415 | 670 | - | |
| 600 | 390 | 440 | 755 | - | | 450 | 755 | - | | 470 | 780 | - | |
| 700 | 430 | 495 | 860 | - | | 505 | 860 | - | | 530 | 895 | - | |
| 800 | 470 | 560 | 975 | - | | 560 | 975 | - | | 595 | 1015 | - | |
| 900 | 510 | 610 | 1075 | - | | 620 | 1075 | - | | 645 | 1115 | - | |
| 1000 | 550 | 660 | 1175 | - | | 670 | 1175 | - | | 705 | 1230 | - | |
| 1100 | 590 ²⁾ | x | x | - | | x | x | - | | x | x | - | |
| 1200 | 630 | 760 | 1375 | - | | 785 | 1405 | - | | 825 | 1455 | - | |
| 1300 | 670 ²⁾ | x | x | - | | x | x | - | | x | x | - | |
| 1400 | 710 | 870 | 1575 | - | | 905 | 1630 | - | | 940 | 1675 | - | |
| 1500 | 750 ²⁾ | x | x | - | | x | x | - | | x | x | - | |
| 1600 | 790 | 980 | 1790 | - | | 1010 | 1830 | - | | 1070 | 1915 | - | |
| 1700 | 830 ²⁾ | x | x | - | | x | x | - | | x | x | - | |
| 1800 | 870 | 1080 | 1990 | - | | 1120 | 2045 | - | | 1170 | 2115 | - | |
| 2000 | 950 | 1180 | 2190 | - | | 1230 | 2265 | - | | 1270 | 2325 | - | |

1) Maß A, C auf Anfrage / dimension A, C at request

2) nach Werksnorm / acc. to manufacturer's standard

x) auf Anfrage / at request

RÜCKSCHLAGKLAPPE - DOPPELEXZENTRISCH

mit Flanschen, Baulänge EN558-1 Reihe 14

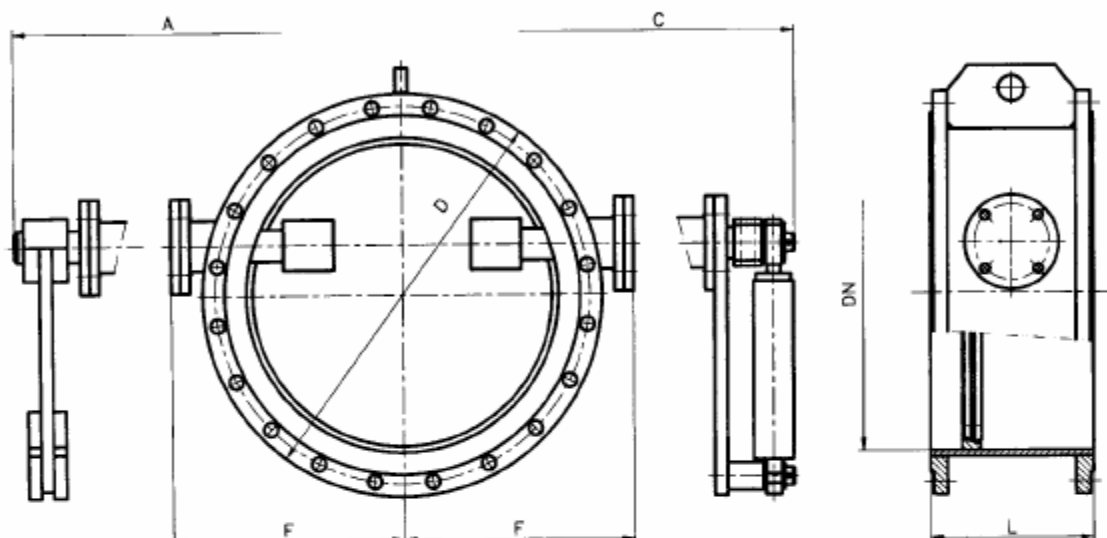
TYPE 5/110-F14

BUTTERFLY CHECK VALVE - DOUBLE ECCENTRIC

flange type, face to face EN558-1 row 14

PN 1-40

| | | | |
|--------------|---|---------------|---|
| Ausführung: | Gemäß DIN3354 Gehäuse Stahl geschweißt | design: | according to DIN3354 welded body |
| Baulänge: | EN558-1, Reihe 14 | face to face: | EN558-1, row 14 |
| Flanschen: | DIN2501 | flanges: | DIN2501 |
| Dichtleiste: | DIN2526, Form C | facing: | DIN2526, face C |
| Option: | Hebel mit Gewicht, hydr. Dämpfung | option: | lever with counter-weight, hydr. damper |



Abmessungen / Dimensions ¹⁾

| DN | L | PN 16 | | | | PN 25 | | | | PN 40 | | | |
|------|-------------------|-------|------|---|------|-------|------|---|------|-------|------|---|------|
| | | F | D | - | [kg] | F | D | - | [kg] | F | D | - | [kg] |
| 80 | 180 | 165 | 200 | - | | 165 | 200 | - | | 175 | 200 | - | |
| 100 | 190 | 175 | 220 | - | | 190 | 235 | - | | 200 | 235 | - | |
| 125 | 200 | 190 | 250 | - | | 210 | 270 | - | | 215 | 270 | - | |
| 150 | 210 | 215 | 285 | - | | 230 | 300 | - | | 240 | 300 | - | |
| 200 | 230 | 245 | 340 | - | | 260 | 360 | - | | 275 | 375 | - | |
| 250 | 250 | 275 | 405 | - | | 300 | 425 | - | | 320 | 450 | - | |
| 300 | 270 | 310 | 460 | - | | 330 | 485 | - | | 355 | 515 | - | |
| 350 | 290 | 340 | 520 | - | | 375 | 555 | - | | 385 | 580 | - | |
| 400 | 310 | 370 | 580 | - | | 405 | 620 | - | | 425 | 660 | - | |
| 450 | 330 | 400 | 640 | - | | x | x | - | | 445 | 685 | - | |
| 500 | 350 | 445 | 715 | - | | 460 | 730 | - | | x | 755 | - | |
| 600 | 390 | 510 | 840 | - | | 525 | 845 | - | | x | 890 | - | |
| 700 | 430 | 545 | 910 | - | | 595 | 960 | - | | x | 995 | - | |
| 800 | 470 | 610 | 1025 | - | | 655 | 1085 | - | | x | 1140 | - | |
| 900 | 510 | 660 | 1125 | - | | 715 | 1185 | - | | x | 1250 | - | |
| 1000 | 550 | 725 | 1255 | - | | 780 | 1320 | - | | x | 1360 | - | |
| 1100 | 590 ²⁾ | x | x | - | | x | x | - | | x | x | - | |
| 1200 | 630 | 850 | 1485 | - | | 895 | 1530 | - | | x | 1575 | - | |
| 1300 | 670 ²⁾ | x | x | - | | x | x | - | | x | x | - | |
| 1400 | 710 | 950 | 1685 | - | | 1015 | 1755 | - | | x | 1795 | - | |
| 1500 | 750 ²⁾ | x | x | - | | x | x | - | | x | x | - | |
| 1600 | 790 | 1080 | 1930 | - | | 1130 | 1975 | - | | x | 2025 | - | |
| 1700 | 830 ²⁾ | x | x | - | | x | x | - | | x | x | - | |
| 1800 | 870 | 1180 | 2130 | - | | 1255 | 2195 | - | | x | x | - | |
| 2000 | 950 | 1300 | 2345 | - | | 1380 | 2425 | - | | x | x | - | |

1) Maß A, C auf Anfrage / dimension A, C at request

2) nach Werksnorm / acc. to manufacturer's standard

x) auf Anfrage / at request

RÜCKSCHLAGKLAPPE - DOPPELEXZENTRISCH

TYPE 5/110-K13

zum Einklemmen zwischen Flanschen, Baulänge EN558-1 Reihe 13

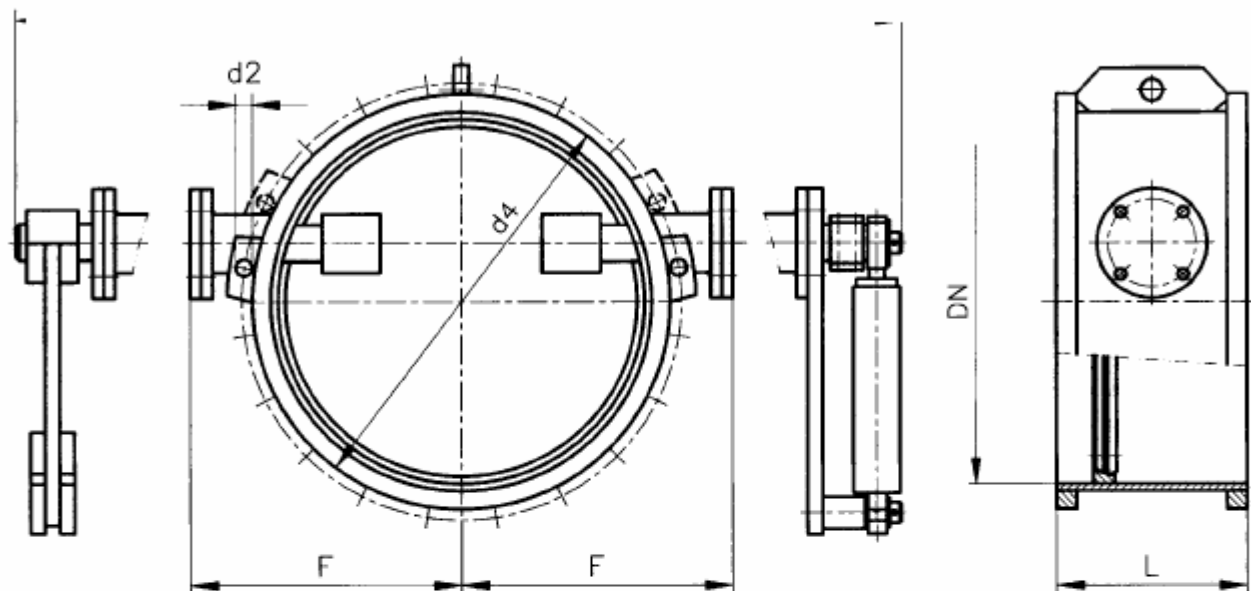
BUTTERFLY CHECK VALVE - DOUBLE ECCENTRIC

PN 1-25

wafer type, face to face EN558-1 row 13

Ausführung: Gemäß DIN3354
 Gehäuse Stahl geschweißt
 Baulänge: EN558-1, Reihe 13
 Einbau: zwischen Flanschen DIN2501
 Dichtleiste: DIN2526, Form C
 Option: Hebel mit Gewicht, hydr. Dämpfung

design: according to DIN3354
 welded body
 face to face: EN558-1, row 13
 installation: wafer for flanges DIN2501
 facing: DIN2526, face C
 option: lever with counter-weight, hydr. damper



Abmessungen / Dimensions ¹⁾

| DN | L | PN 1-2,5 | | | | PN 6 | | | | PN 10 | | | |
|------|-------------------|----------|------|----|------|------|------|----|------|-------|------|----|------|
| | | F | d4 | d2 | [kg] | F | d4 | d2 | [kg] | F | d4 | d2 | [kg] |
| 80 | 114 | 150 | 128 | 18 | | 150 | 128 | 18 | | 165 | 138 | 18 | |
| 100 | 127 | 160 | 148 | 18 | | 160 | 148 | 18 | | 175 | 158 | 18 | |
| 125 | 140 | 175 | 178 | 18 | | 175 | 178 | 18 | | 190 | 188 | 18 | |
| 150 | 140 | 190 | 202 | 18 | | 190 | 202 | 18 | | 205 | 212 | 22 | |
| 200 | 152 | 215 | 258 | 18 | | 225 | 258 | 18 | | 235 | 268 | 22 | |
| 250 | 165 | 245 | 312 | 18 | | 255 | 312 | 18 | | 270 | 320 | 22 | |
| 300 | 178 | 275 | 365 | 22 | | 285 | 365 | 22 | | 295 | 370 | 22 | |
| 350 | 190 | 310 | 415 | 22 | | 310 | 415 | 22 | | 325 | 430 | 22 | |
| 400 | 216 | 335 | 465 | 22 | | 335 | 465 | 22 | | 355 | 482 | 26 | |
| 450 | 222 | 360 | 520 | 22 | | 370 | 520 | 22 | | 380 | 532 | 26 | |
| 500 | 229 | 385 | 570 | 22 | | 395 | 570 | 22 | | 415 | 585 | 26 | |
| 600 | 267 | 440 | 670 | 26 | | 450 | 670 | 26 | | 470 | 685 | 30 | |
| 700 | 292 | 495 | 775 | 26 | | 505 | 775 | 26 | | 530 | 800 | 30 | |
| 800 | 318 | 560 | 880 | 30 | | 560 | 880 | 30 | | 595 | 905 | 33 | |
| 900 | 330 | 610 | 980 | 30 | | 620 | 980 | 30 | | 645 | 1005 | 33 | |
| 1000 | 410 | 660 | 1080 | 30 | | 670 | 1080 | 30 | | 705 | 1110 | 36 | |
| 1100 | 440 ²⁾ | x | x | x | | x | x | | | x | x | x | |
| 1200 | 470 | 760 | 1280 | 30 | | 785 | 1295 | 33 | | 825 | 1330 | 39 | |
| 1300 | 500 ²⁾ | x | x | x | | x | x | | | x | x | x | |
| 1400 | 530 | 870 | 1480 | 30 | | 905 | 1510 | 36 | | 940 | 1535 | 42 | |
| 1500 | 560 ²⁾ | x | x | x | | x | x | | | x | x | x | |
| 1600 | 600 | 980 | 1690 | 30 | | 1010 | 1710 | 36 | | 1070 | 1760 | 48 | |
| 1700 | 630 ²⁾ | x | x | x | | x | x | | | x | x | x | |
| 1800 | 670 | 1080 | 1890 | 30 | | 1120 | 1920 | 39 | | 1170 | 1960 | 48 | |
| 2000 | 760 | 1180 | 2090 | 30 | | 1230 | 2125 | 42 | | 1270 | 2170 | 48 | |

1) Maß A, C auf Anfrage / dimension A, C at request

2) nach Werksnorm / acc. to manufacturer's standard

x) auf Anfrage / at request

RÜCKSCHLAGKLAPPE - DOPPELEXZENTRISCH

TYPE 5/110-K13

zum Einklemmen zwischen Flanschen, Baulänge EN558-1 Reihe 13

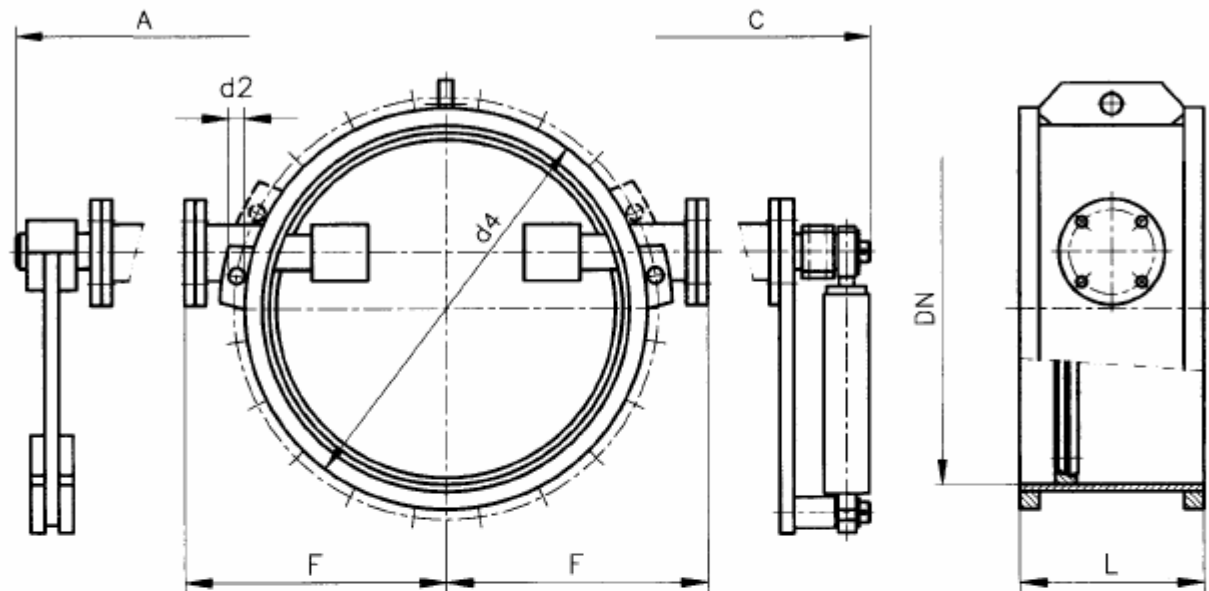
BUTTERFLY CHECK VALVE - DOUBLE ECCENTRIC

PN 1-25

wafer type, face to face EN558-1 row 13

Ausführung: Gemäß DIN3354
 Gehäuse Stahl geschweißt
 Baulänge: EN558-1, Reihe 13
 Einbau: zwischen Flanschen DIN2501
 Dichtleiste: DIN2526, Form C
 Option: Hebel mit Gewicht, hydr. Dämpfung

design: according to DIN3354
 welded body
 face to face: EN558-1, row 13
 installation: wafer for flanges DIN2501
 facing: DIN2526, face C
 option: lever with counter-weight, hydr. damper



Abmessungen / Dimensions ¹⁾

| DN | L | PN 16 | | | | PN 25 | | | |
|------|-------------------|-------|------|----|------|-------|------|----|------|
| | | F | d4 | d2 | [kg] | F | d4 | d2 | [kg] |
| 80 | 114 | 165 | 138 | 18 | | 165 | 138 | 18 | |
| 100 | 127 | 175 | 158 | 18 | | 190 | 162 | 22 | |
| 125 | 140 | 190 | 188 | 18 | | 210 | 188 | 26 | |
| 150 | 140 | 215 | 212 | 22 | | 230 | 218 | 26 | |
| 200 | 152 | 245 | 268 | 22 | | 260 | 278 | 26 | |
| 250 | 165 | 275 | 320 | 26 | | 300 | 335 | 30 | |
| 300 | 178 | 310 | 378 | 26 | | 330 | 395 | 30 | |
| 350 | 190 | 340 | 438 | 26 | | 375 | 450 | 33 | |
| 400 | 216 | 370 | 490 | 30 | | 405 | 505 | 36 | |
| 450 | 222 | 400 | 550 | 30 | | x | x | x | |
| 500 | 229 | 445 | 610 | 33 | | 460 | 615 | 36 | |
| 600 | 267 | 510 | 725 | 36 | | 525 | 720 | 39 | |
| 700 | 292 | 545 | 795 | 36 | | 595 | 820 | 42 | |
| 800 | 318 | 610 | 900 | 39 | | 655 | 930 | 48 | |
| 900 | 330 | 660 | 1000 | 39 | | 715 | 1030 | 48 | |
| 1000 | 410 | 725 | 1115 | 42 | | 780 | 1140 | 56 | |
| 1100 | 440 ²⁾ | x | x | x | | x | x | x | |
| 1200 | 470 | 850 | 1330 | 48 | | 895 | 1350 | 56 | |
| 1300 | 500 ²⁾ | x | x | x | | x | x | x | |
| 1400 | 530 | 950 | 1530 | 48 | | 1015 | 1560 | 62 | |
| 1500 | 560 ²⁾ | x | x | x | | x | x | x | |
| 1600 | 600 | 1080 | 1750 | 56 | | 1130 | 1780 | 62 | |
| 1700 | 630 ²⁾ | x | x | x | | x | x | x | |
| 1800 | 670 | 1180 | 1950 | 56 | | 1255 | 1985 | 70 | |
| 2000 | 760 | 1300 | 2150 | 62 | | 1380 | 2210 | 70 | |

1) Maß A, C auf Anfrage / dimension A, C at request

2) nach Werksnorm / acc. to manufacturer's standard

x) auf Anfrage / at request

RÜCKSCHLAGKLAPPE - DOPPELEXZENTRISCH

mit Schweißenden, Baulänge DIN3202 - S5

TYPE 5/110-S05

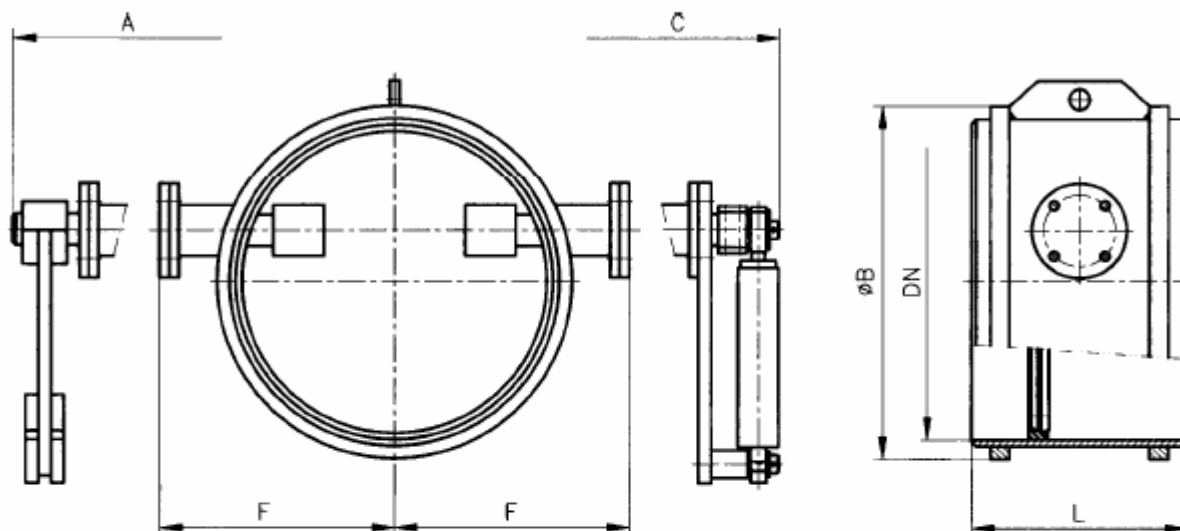
BUTTERFLY CHECK VALVE - DOUBLE ECCENTRIC

butt welding type, face to face DIN3202 - S5

PN 1-40

Ausführung: Gemäß DIN3354
 Gehäuse Stahl geschweißt
 Baulänge: DIN3202 - S5
 Schweißenden: DIN3239-T1
 Fugenform: DIN2559-T1
 Option: Hebel mit Gewicht, hydr. Dämpfung

design: according to DIN3354
 welded body
 face to face: DIN3202 - S5
 weld ends: DIN3239-T1
 weld joint: DIN2559-T1
 option: lever with counter-weight, hydr. damper



Abmessungen / Dimensions

| DN | L | PN 1-2,5 | | | PN 6 | | | PN 10 | | |
|------|-------------------|----------|------|------|------|------|------|-------|------|------|
| | | F | øB | [kg] | F | øB | [kg] | F | øB | [kg] |
| 80 | 180 | 150 | 110 | | 150 | 110 | | 165 | 110 | |
| 100 | 190 | 160 | 135 | | 160 | 135 | | 175 | 135 | |
| 125 | 200 | 175 | 160 | | 175 | 160 | | 190 | 160 | |
| 150 | 210 | 190 | 190 | | 190 | 190 | | 205 | 200 | |
| 200 | 430 | 215 | 250 | | 225 | 250 | | 235 | 250 | |
| 250 | 450 | 245 | 290 | | 255 | 290 | | 270 | 290 | |
| 300 | 470 | 275 | 340 | | 285 | 340 | | 295 | 340 | |
| 350 | 490 | 310 | 390 | | 310 | 390 | | 325 | 390 | |
| 400 | 510 | 335 | 440 | | 335 | 440 | | 355 | 440 | |
| 450 | 530 ²⁾ | 360 | 490 | | 370 | 490 | | 380 | 490 | |
| 500 | 550 | 385 | 540 | | 395 | 540 | | 415 | 555 | |
| 600 | 590 | 440 | 640 | | 450 | 640 | | 470 | 655 | |
| 700 | 630 | 495 | 740 | | 505 | 740 | | 530 | 770 | |
| 800 | 670 | 560 | 850 | | 560 | 855 | | 595 | 870 | |
| 900 | 710 | 610 | 950 | | 620 | 955 | | 645 | 985 | |
| 1000 | 750 | 660 | 1050 | | 670 | 1055 | | 705 | 1085 | |
| 1100 | 790 ²⁾ | x | 1165 | | x | 1170 | | x | 1185 | |
| 1200 | 830 | 760 | 1265 | | 785 | 1270 | | 825 | 1290 | |
| 1300 | x | x | 1365 | | x | 1370 | | x | 1390 | |
| 1400 | x | 870 | 1465 | | 905 | 1470 | | 940 | 1490 | |
| 1500 | x | x | 1575 | | x | 1585 | | x | 1615 | |
| 1600 | x | 980 | 1680 | | 1010 | 1685 | | 1070 | 1715 | |
| 1700 | x | x | 1780 | | x | 1785 | | x | 1815 | |
| 1800 | x | 1080 | 1885 | | 1120 | 1890 | | 1170 | 1915 | |
| 2000 | x | 1180 | 2085 | | 1230 | 2090 | | 1270 | 2120 | |

1) Maß A, C auf Anfrage / dimension A, C at request

2) nach Werksnorm / acc. to manufacturer's standard

x) auf Anfrage / at request

RÜCKSCHLAGKLAPPE - DOPPELEXZENTRISCH

mit Schweißenden, Baulänge DIN3202 - S5

TYPE 5/110-S05

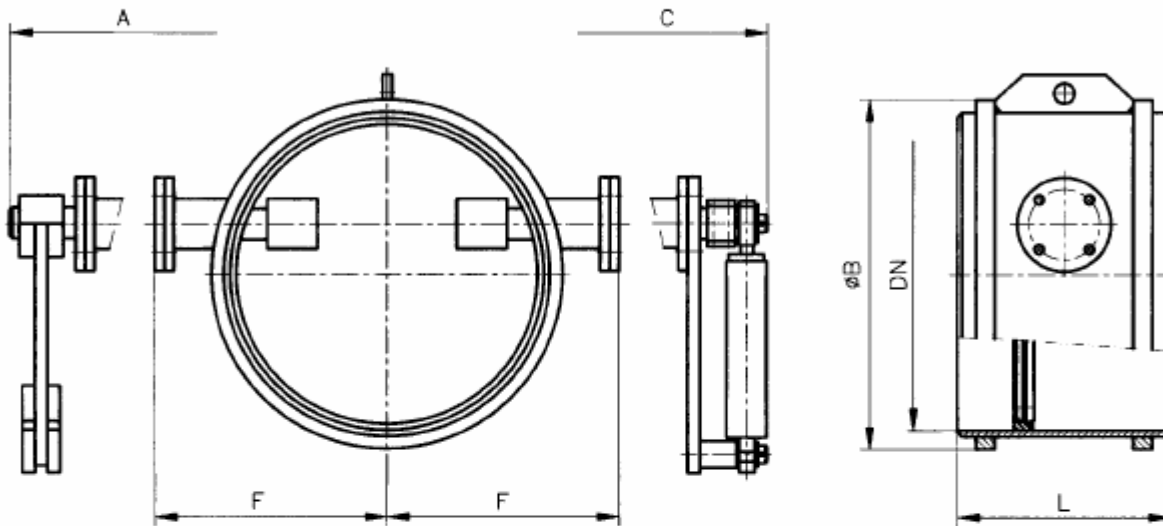
BUTTERFLY CHECK VALVE - DOUBLE ECCENTRIC

butt welding type, face to face DIN3202 - S5

PN 1-40

Ausführung: Gemäß DIN3354
Gehäuse Stahl geschweißt
Baulänge: DIN3202 - S5
Schweißenden: DIN3239-T1
Fugenform: DIN2559-T1
Option: Hebel mit Gewicht, hydr. Dämpfung

design: according to DIN3354
welded body
face to face: DIN3202 - S5
weld ends: DIN3239-T1
weld joint: DIN2559-T1
option: lever with counter-weight, hydr. damper



Abmessungen / Dimensions ¹⁾

| DN | L | PN 16 | | | PN 25 | | | PN 40 | | |
|------|-------------------|-------|------|------|-------|------|------|-------|------|------|
| | | F | øB | [kg] | F | øB | [kg] | F | øB | [kg] |
| 80 | 180 | 165 | 100 | | 165 | 100 | | 175 | 100 | |
| 100 | 190 | 175 | 145 | | 190 | 145 | | 200 | 145 | |
| 125 | 200 | 190 | 170 | | 210 | 170 | | 215 | 180 | |
| 150 | 210 | 215 | 200 | | 230 | 200 | | 240 | 210 | |
| 200 | 430 | 245 | 250 | | 260 | 260 | | 275 | 260 | |
| 250 | 450 | 275 | 290 | | 300 | 305 | | 320 | 325 | |
| 300 | 470 | 310 | 355 | | 330 | 355 | | 355 | 375 | |
| 350 | 490 | 340 | 405 | | 375 | 410 | | 385 | 440 | |
| 400 | 510 | 370 | 455 | | 405 | 475 | | 425 | 490 | |
| 450 | 530 ²⁾ | 400 | 510 | | x | 525 | | 445 | 570 | |
| 500 | 550 | 445 | 560 | | 460 | 575 | | x | 620 | |
| 600 | 590 | 510 | 675 | | 525 | 690 | | x | 730 | |
| 700 | 630 | 545 | 775 | | 595 | 795 | | x | 830 | |
| 800 | 670 | 610 | 890 | | 655 | 895 | | x | 960 | |
| 900 | 710 | 660 | 990 | | 715 | 1020 | | x | 1070 | |
| 1000 | 750 | 725 | 1115 | | 780 | 1130 | | x | 1170 | |
| 1100 | 790 ²⁾ | x | 1215 | | x | 1230 | | x | 1280 | |
| 1200 | 830 | 850 | 1320 | | 895 | 1360 | | x | 1390 | |
| 1300 | x | x | 1420 | | x | 1460 | | x | 1490 | |
| 1400 | x | 950 | 1530 | | 1015 | 1570 | | x | 1620 | |
| 1500 | x | x | 1630 | | x | 1670 | | x | 1730 | |
| 1600 | x | 1080 | 1730 | | 1130 | 1770 | | x | 1830 | |
| 1700 | x | x | 1860 | | x | 1880 | | x | 1940 | |
| 1800 | x | 1180 | 1960 | | 1255 | 1980 | | x | 2040 | |
| 2000 | x | 1300 | 2160 | | 1380 | 2190 | | x | 2260 | |

1) Maß A, C auf Anfrage / dimension A, C at request

2) nach Werksnorm / acc. to manufacturer's standard

x) auf Anfrage / at request

RÜCKSCHLAGKLAPPE

doppelexzentrisch, mit Fanschen

BUTTERFLY VALVE

double eccentric, flange type

TYPE 5/121

PN 10/16

Ausführung:

- Klappengeometrie – doppelexzentrisch
- Gehäuse gegossen, weich oder metallisch -dichtend
- Baulänge nach EN558-1 – Reihe 14

Anschluss:

- Flanschen nach EN1092-1; Dichtfläche B1

Einsatz:

- für flüssige und gasförmige Medien

Design:

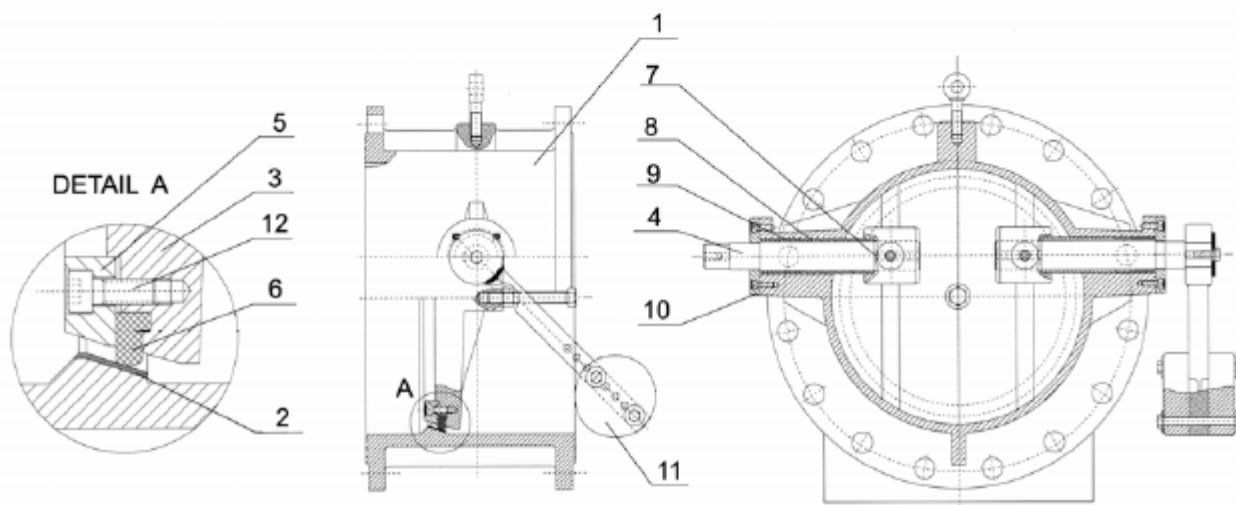
- valve geometry - double eccentric
- casted body, soft or metallic sealed
- face to face dimensions acc. EN558-1 – Row 14

Connection:

- Flanges acc. EN1092-1; facing B1

Application:

- for liquids and gaseous media



| Werkstoffe / Materials | | | |
|------------------------|-------------------|-------------------|-----------------------------|
| Pos. | Benennung | Designation | Werkstoff / Material |
| 1 | Gehäuse | body | GGG 50 |
| 2 | Gehäusesitz | body seat | AISI316 geschweißt / welded |
| 3 | Klappenscheibe | disc | GGG 50 |
| 4 | Welle | shaft | X20Cr13; AISI304; AISI316 |
| 5 | Stützring | holder ring | GGG 50 |
| 6 | Klappendichtung | disc sealing | EPDM |
| 7 | Paßfeder | key | C 45 K |
| 8 | Lagerbuchse | bearing | Bronze |
| 9 | Packung | packing | graphite |
| 10 | Deckel | cover | St 37 |
| 11 | Hebel mit Gewicht | lever with weight | St 37 |
| 12 | Schraube | bolt | 8.8 verzinkt / galvanized |

RÜCKSCHLAGKlappe

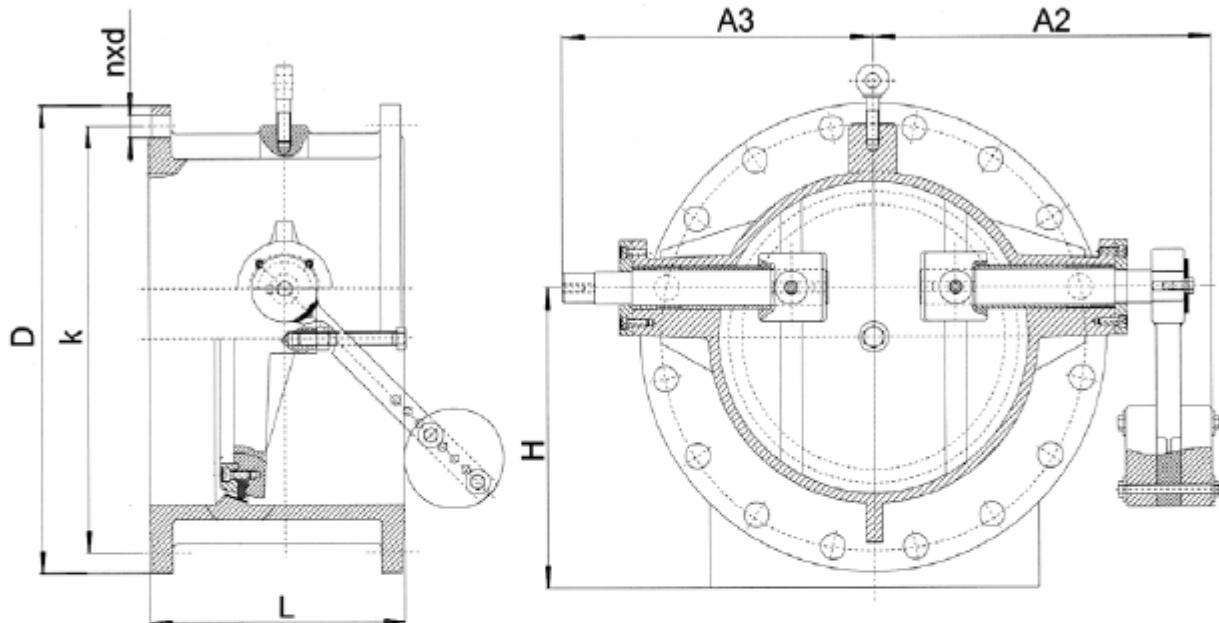
doppelexzentrisch, mit Flanschen

BUTTERFLY VALVE

double eccentric, flange type

TYPE 5/121

PN 10/16



| Abmessungen / Dimensions | | | | | | | | | | | |
|--------------------------|-----|-----|-----|-----|------|------|-------|------|------|-------|--|
| DN | L | H | A2 | A3 | PN10 | | | PN16 | | | |
| | | | | | D | k | nxd | D | k | nxd | |
| 150 | 210 | 158 | 225 | 203 | 285 | 240 | 8x22 | 285 | 240 | 8x22 | |
| 200 | 230 | 190 | 240 | 220 | 340 | 295 | 8x22 | 340 | 295 | 12x22 | |
| 250 | 250 | 220 | 325 | 302 | 395 | 350 | 12x22 | 405 | 355 | 12x26 | |
| 300 | 270 | 250 | 360 | 314 | 445 | 400 | 12x22 | 460 | 410 | 12x26 | |
| 350 | 290 | 280 | 380 | 345 | 505 | 460 | 16x22 | 505 | 470 | 16x26 | |
| 400 | 310 | 302 | 410 | 374 | 565 | 515 | 16x26 | 580 | 525 | 16x30 | |
| 450 | 330 | 330 | 452 | 422 | 615 | 565 | 20x26 | 640 | 585 | 20x30 | |
| 500 | 350 | 380 | 480 | 456 | 670 | 620 | 20x26 | 715 | 650 | 20x33 | |
| 600 | 390 | 458 | 590 | 549 | 780 | 725 | 20x30 | 840 | 770 | 20x36 | |
| 700 | 430 | 460 | 615 | 579 | 895 | 840 | 24x30 | 910 | 840 | 24x36 | |
| 800 | 470 | 525 | 680 | 685 | 1015 | 950 | 24x33 | 1025 | 950 | 24x39 | |
| 900 | 510 | 570 | 780 | 723 | 1115 | 1050 | 28x33 | 1125 | 1050 | 28x39 | |
| 1000 | 550 | 650 | 825 | 793 | 1230 | 1160 | 28x36 | 1255 | 1170 | 28x42 | |

Sonderausführung:

- hydraulische Dämpfung
- Baulängen, Größen und Flanschen nach anderen Normen auf Anfrage

Special design:

- hydraulic damping
- face to face dimensions, sizes and flanges acc. other standards at request