

# SWING CHECK VALVE

bolted cover

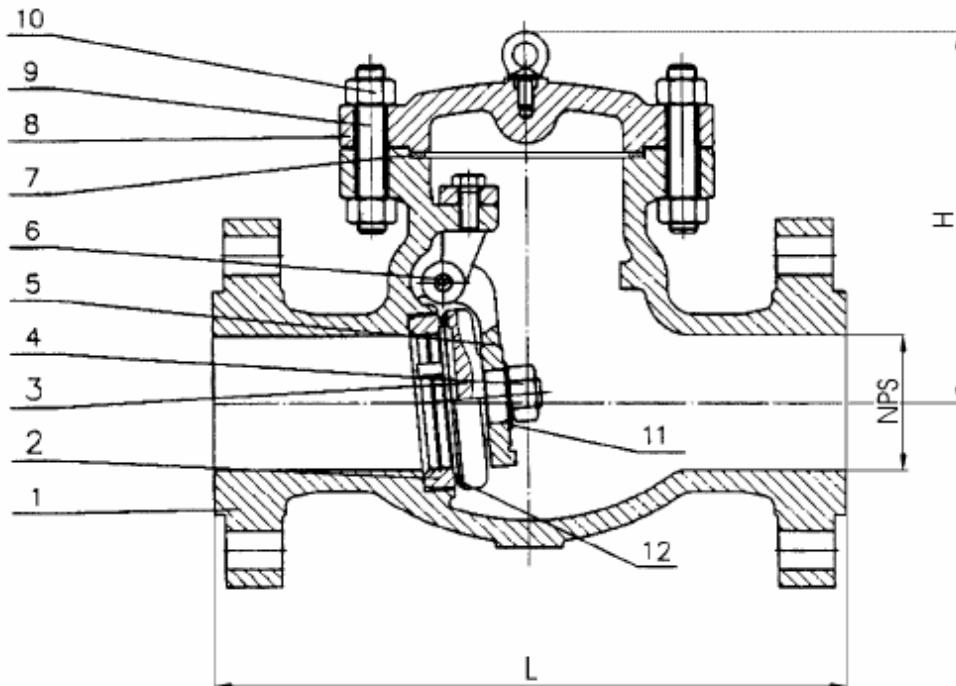
**TYPE 5/080**  
**CLASS 150-1500**

**Design:**

- according ANSI B 16.34 and API 6D or BS 1868
- face to face dimensions acc. ANSI B 16.10
- welded-in or threaded seat rings with stellite overlay.

**Connection:**

- flanges acc. ANSI B 16.5
- butt welding ends acc. ANSI B 16.25.



Werkstoffe / Materials										
Pos.	Designation	Carbon Steel		High temp. Steel			Stainless Steel			
		WCB	LCB	WC1	WC6	WC9	CF8	CF8 M	CF3	CF3M
1	body	A216WCB	A352LCB	A217 WC1	A217 WC6	A217 WC9	A351 CF8	A351 CF8M	A351 CF3	A351 CF3M
2	seat ring	A105	A350 LF2	A182 F304	A182 F304	A182 F304	A182 F304	A182 F316	A182 F304L	A182 F316L
3	disc	A216 WCB	A352 LCB	A217 WC1	A217 WC6	A217 WC9	A351 CF8	A351 CF8M	A351 CF3	A351 CF3M
4	disc nut	A182 F304	A182 F304	A182 F304	A182 F304	A182 F304	A182 F304	A182 F316	A182 F304L	A182 F316L
5	hinge	A216 WCB	A352 LCB	A217 WC1	A217 WC6	A217 WC9	A351 CF8	A351 CF8M	A351 CF3	A351 CF3M
6	hinge pin	A182 F6	A182 F6	A182 F304	A182 F304	A182 F304	A182 F304	A182 F316	A182 F304L	A182 F316L
7	gasket	SS / graphite								
8	cover	A216 WCB	A352 LCB	A217 WC1	A217 WC6	A217 WC9	A351 CF8	A351 CF8M	A351 CF3	A351 CF3M
9	cover bolt	A193 B7	A193 B7	A193 B7	A320 L7	A320 L7	A320 B8	A320 B8	A193 B8M	A193 B8M
10	cover nut	A194 2H	A194 2H	A194 2H	A194 2H	A194 4	A194 7	A194 8	A194 8	A194 8
11	washer	Steel		Stainless Steel			Stainless Steel			
12	seat overlay	13%Cr and/or 18%CrNi and/or HF (Co-Cra)								
Special materials (C5, C12) at request										

# SWING CHECK VALVE

bolted cover

# TYPE 5/080

# CLASS 150-1500

Dimensions:

150 LBS							
NPS	DN	L			H	Weight [kg]	
		RF	BW	RTJ		RF	BW
1 ½	40	165	165	178	150	11	8,5
2	50	203	203	216	170	15	12
2 ½	65	216	216	229	180	26	17
3	80	241	241	254	185	27	18
4	100	292	292	305	215	42	32
5	125	330	330	343	240	69	57
6	150	356	356	368	260	75	60
8	200	495	495	508	300	124	106
10	250	622	622	635	350	200	174
12	300	699	699	711	400	310	258
14	350	787	787	800	450	428	368
16	400	864	864	876	480	555	483
18	450	978	978	991	540	775	685
20	500	978	978	991	600	835	720
24	600	1295	1295	1308	680	1300	1150

300 LBS							
NPS	DN	L			H	Weight [kg]	
		RF	BW	RTJ		RF	BW
1 ½	40	241	241	254	160	15	11
2	50	267	267	283	170	21	15
2 ½	65	292	292	308	185	30	22
3	80	318	318	333	215	39	30
4	100	356	356	371	235	70	44
5	125	400	400	416	270	115	92
6	150	445	445	460	300	125	98
8	200	533	533	549	340	190	150
10	250	622	622	638	350	290	230
12	300	711	711	727	420	450	375
14	350	838	838	854	480	700	490
16	400	864	864	879	520	774	640
18	450	978	978	994	600	1000	850
20	500	1016	1016	1035	670	1273	1100
24	600	1346	1346	1368	750	1650	1400

600 LBS							
NPS	DN	L			H	Weight [kg]	
		RF	BW	RTJ		RF	BW
2	50	292	292	295	175	28	20
2 ½	65	330	330	333	200	38	30
3	80	356	356	359	230	52	40
4	100	432	432	435	295	87	65
6	150	559	559	562	360	224	133
8	200	660	660	664	400	354	280
10	250	787	787	791	460	626	530
12	300	838	838	841	520	790	670
14	350	889	889	892	560	892	752
16	400	991	991	994	650	1200	1020
18	450	1092	1092	1095	730	1600	1350
20	500	1194	1194	1200	800	2420	2050
24	600	1397	1397	1407	900	3150	2720

900 LBS							
NPS	DN	L			H	Weight [kg]	
		RF	BW	RTJ		RF	BW
2	50	368	368	371	250	69	60
2 ½	65	419	419	422	270	93	78
3	80	381	381	384	230	85	70
4	100	457	457	460	310	145	120
6	150	610	610	613	360	310	265
8	200	737	737	740	430	500	385
10	250	838	838	841	480	772	600
12	300	965	965	968	560	1080	860
14	350	1029	1029	1038	630	1380	1140
16	400	1130	1130	1140	700	1810	1510
18	450	1219	1219	1232	750	2400	2050
20	500	1321	1321	1334	850	3500	3100
24	600	1549	1549	1568	1000	4700	4200

1500 LBS							
NPS	DN	L			H	Weight [kg]	
		RF	BW	RTJ		RF	BW
2	50	368	368	371	250	69	60
2 ½	65	419	419	422	270	93	78
3	80	470	470	473	300	120	90
4	100	546	546	549	330	235	185
6	150	705	705	711	450	540	450
8	200	832	832	841	500	945	785
10	250	991	991	1000	560	1275	1065
12	300	1130	1130	1146	650	1870	1550
14	350	1257	1257	1276	750	2580	2100
16	400	1384	1384	1407	800	3260	2700
18	450	1537	1537	1559	900	4080	3400
20	500	1664	1664	1686	1000	5950	5200
24	600	1943	1943	1972	1200	8000	7100

# CHECK VALVE

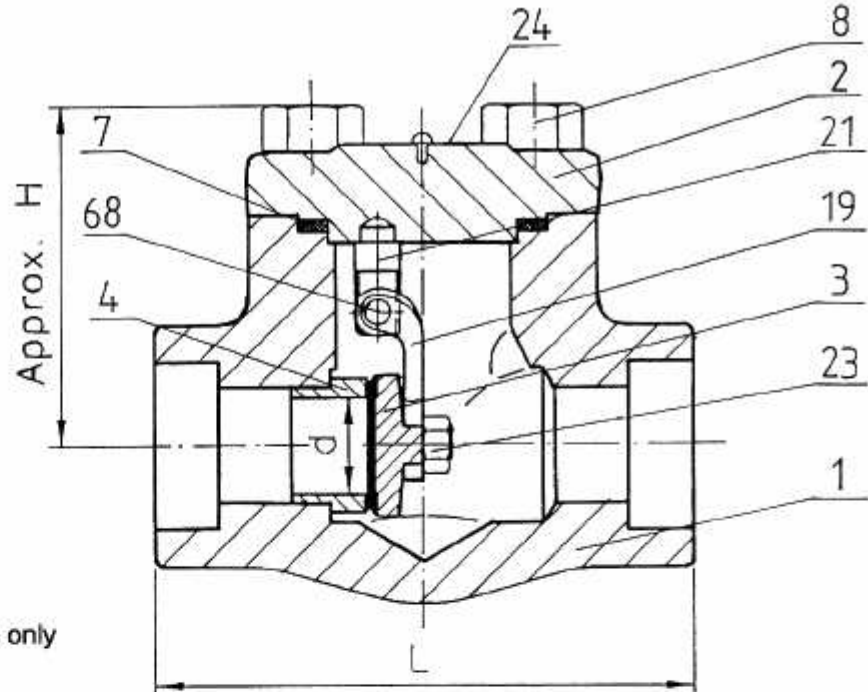
swing type

TYPE 5/128, 5/131, 5/134

CLASS 150-1500

type	class
5/128	800
5/131	900/1500
5/134	150/300/600

API standard 602  
reduced & full port  
bolted or welded cover  
swing type  
(horizontal or vertical service only)  
socket welding, threaded,  
flanged or buttwelding ends



Part No.	Part Name	Q'ty	Materials (ASTM Specifications)												
			A105	A 182										A 350	
				F304	F304L	F316	F316L	F1	F5	F9	F11	F22	LF1	LF2	LF2
1	Body	1	(1) A105	A182 -F304	A182 -F304L	A182 -F316	A182 -F316L	A182 -F1	A182 -F5	A182 -F9	A182 -F11	A182 -F22	A182 -LF1	A182 -LF2	A182 -LF3
2	Cover	1	(1) A105	A182 F301	A182 -F304L	A182 -F316	A182 -F316L	A182 F1	A182 -F5	A182 -F9	A182 -F11	A182 -F22	A182 -LF1	A182 -LF2	A182 -LF3
3	Disc	1	A276 -420	A276 -304	A276 - 316			A276 - 420							
4	Seat Ring	1	A276 -410	A276 -304	A276 - 316			A276 - 410							
7	Gasket	1	SS304+	SS304 + PTFE				SS304							
8	Cover Bolt	4	A193 -B7	A193 - B8				A193 - B7				A320 -L7	A193 -B8		
19	Hinge	1	A743 -CA40	A351 -CF8	A351 - CF8M			A743 - CA40							
21	Supporter	1	A276 -410	A276 -304	A276 - 316			A276 - 410							
23	Retaining Nut	1	A194 - 8												
24	Nameplate	1	Aluminium												
68	Hinge Pin	1	A276-304												

**CHECK VALVE**  
swing type

**TYPE 5/128, 5/131, 5/134**

**CLASS 150-1500**

**Dimensions**  
unit: mm (inch)

**Class 800 - 1500**

Class	Port	Size (NPS)	End to End (L)	Center to Top (H)	Port Diameter (d)	Approx. Weight kg (lb)
800	Reduced	1/4	80 (3.15)	55 (2.16)	8 (0.31)	1.3 (2.9)
		3/8	80 (3.15)	55 (2.16)	10 (0.39)	1.3 (2.9)
		1/2	80 (3.15)	55 (2.16)	13 (0.51)	1.3 (2.9)
		3/4	88 (3.47)	55 (2.16)	13 (0.51)	1.4 (3.1)
		1	108 (4.25)	70 (2.75)	18 (0.71)	2.4 (5.3)
		1 1/4	120 (4.72)	91 (3.58)	29 (1.14)	4.9 (10.8)
		1 1/2	120 (4.72)	91 (3.58)	29 (1.14)	4.9 (10.8)
	Full	2	135 (5.43)	106 (4.17)	37 (1.45)	7.6 (16.8)
		1/4	80 (3.15)	55 (2.16)	8 (0.31)	1.3 (2.9)
		3/8	80 (3.15)	55 (2.16)	10 (0.39)	1.3 (2.9)
		1/2	80 (3.15)	55 (2.16)	13 (0.51)	1.3 (2.9)
		3/4	108 (4.25)	70 (2.75)	18 (0.71)	2.4 (5.3)
		1	120 (4.72)	91 (3.58)	24 (0.94)	4.9 (10.8)
		1 1/4	120 (4.72)	91 (3.58)	29 (1.14)	7.6 (16.8)
900/1500	Reduced	1 1/2	138 (5.43)	106 (4.17)	37 (1.45)	7.6 (16.8)
		2	220 (8.66)	113 (4.45)	46 (1.81)	12.1 (26.7)
		1/4	108 (4.25)	70 (2.75)	8 (0.31)	2.4 (5.3)
		3/8	108 (4.25)	70 (2.75)	10 (0.39)	2.4 (5.3)
		1/2	108 (4.25)	70 (2.75)	13 (0.51)	2.4 (5.3)
		3/4	108 (4.25)	70 (2.75)	13 (0.51)	2.4 (5.3)
		1	120 (4.45)	91 (3.58)	18 (0.71)	4.9 (10.8)
	Full	1 1/4	120 (4.45)	91 (3.58)	29 (1.14)	7.6 (16.8)
		1 1/2	138 (5.43)	106 (4.17)	29 (1.14)	7.6 (16.8)
		2	220 (8.66)	113 (4.45)	37 (1.45)	12.1 (26.7)
		1/4	108 (4.25)	70 (2.75)	8 (0.31)	2.4 (5.3)
		3/8	108 (4.25)	70 (2.75)	10 (0.39)	2.4 (5.3)
		1/2	108 (4.25)	70 (2.75)	13 (0.51)	2.4 (5.3)
		3/4	120 (4.72)	91 (3.58)	18 (0.71)	4.9 (10.8)
Full	1	120 (4.72)	91 (3.58)	24 (0.94)	7.6 (16.8)	
	1 1/4	138 (5.43)	106 (4.17)	29 (1.14)	12.1 (26.7)	
	1 1/2	220 (8.66)	113 (4.45)	37 (1.45)	12.1 (26.7)	

**DIMENSIONS WELDED FLANGED ENDS** ▲ FACE TO FACE ANSI B16.10

Nominal diameter	mm(in)	15(1/2)	20(3/4)	25(1)	32(1 1/4)	40(1 1/2)	50(2)
d	LIFT	mm	13	17	23	30	46.5
	SWING	mm	13.6	18	24	29	46.5
CLASS 150 L	mm	108	117	127	140	165	203
CLASS 300 L	mm	152	178	203	216	229	267
CLASS 600 L	mm	165	190	216	229	241	292
H	mm	61	61	78	84	103	118
CLASS 150 Weight	kg	2.6	3.4	4.4	8.2	9.0	12.6
CLASS 300 Weight	kg	2.7	3.7	4.7	8.8	9.6	13.7
CLASS 600 Weight	kg	3.0	4.0	5.8	9.5	10.0	15.6

# RÜCKSCHLAGKLAPPE

Type 5/260

## SWING CHECK VALVE

PN 10/16

### Ausführung und Verwendung:

Rückschlagklappe aus GG25 bzw. GGG40 für Wasser, Trinkwasser, Seewasser, Gas, Dampf und Heißwasser sowie für Öl und Luft.

### Design and application:

Swing check valve made of GG25 resp. GGG40 for water, drinking water, sea water, gas, steam and superheated water, oil and air.

### Einbaumaße:

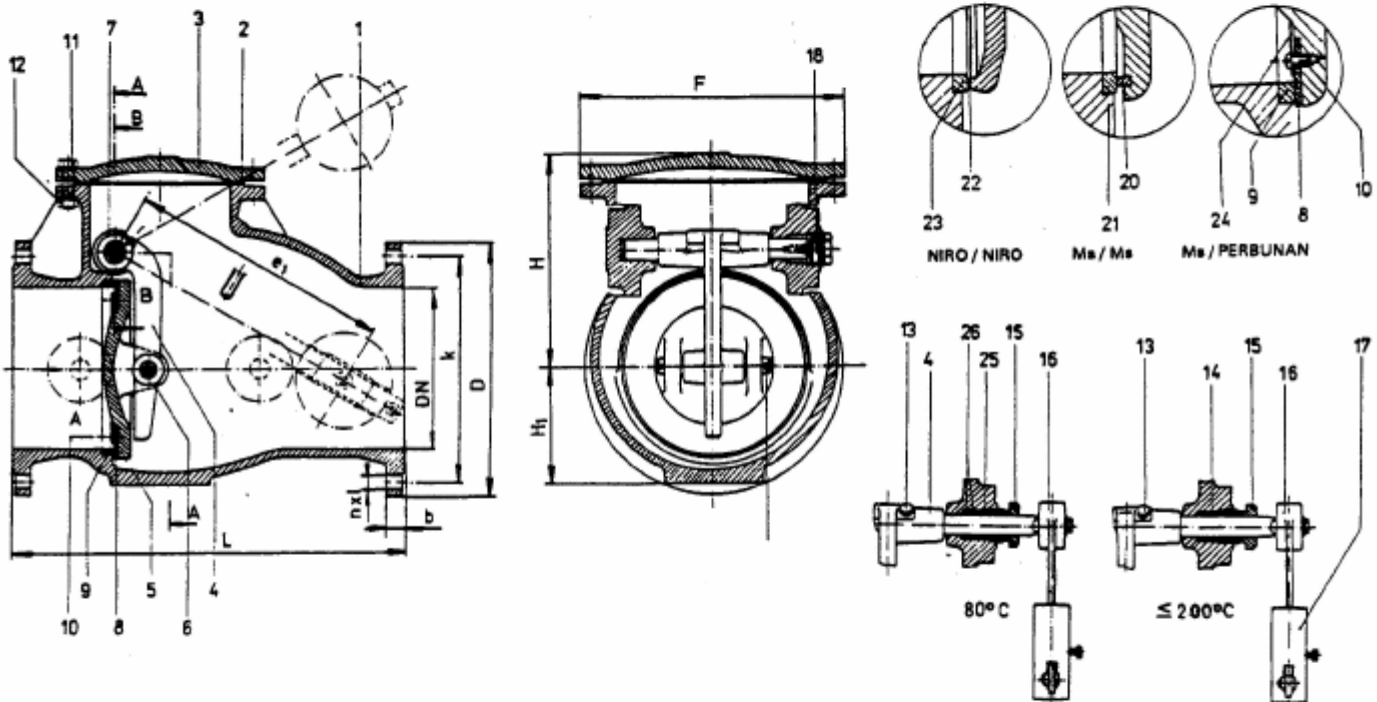
Einbau zwischen Flanschen gemäß DIN 2501, ANSI, B.S. oder nach anderen Normen.

Baulänge gemäß DIN 3202 - F6.

### End connections:

Installation between flanges according DIN 2501, ANSI, B.S. or other standards.

Face to face according DIN 3202 - F6.



Werkstofftabelle/Material specifications

Pos.	nach DIN acc. DIN	vergleichbar mit BS comparable to BS	Pos.	nach DIN acc. DIN	vergleichbar mit BS comparable to BS
1	GG25 (PN10) GGG40 (PN16)	1452: 56 Grade 17 2789: 61/SNG24/17	14	Graphit/Asbest	Graphit/Asbest
2	lt 400 Klingerit	lt 400	15	GG25 (PN10) Cu65Zn	1452: 56 Grade 17 1400: 61 SCB 3 - C
3	GG25 (PN10) GGG40 (PN16)	1452: 56 Grade 17 2789: 61/SNG24/17	16	St 42-2	
4	GG25	1452: 56 Grade 17	17	GG25	1452: 56 Grade 17
5	GG25	1452: 56 Grade 17	18	GG25	1452: 56 Grade 17
6	X15Cr13	420 S 29	19	X15Cr13	420 S 29
7	X15Cr13	420 S 29	20	Cu65Zn (PN16)	1400: 61 SCB 3 - C
8	Perburan	Perburan	21	Cu65Zn (PN16)	1400: 61 SCB 3 - C
9	Cu65Zn	1400: 61 SCB 3 - C	22	CrNi Plasma	CrNi Plasma
10	Cu65Zn	1400: 61 SCB 3 - C	23	X15Cr13	420 S 29
11	5.8 gal Zn	970: 1955 EN 2	24	Cu65Zn	1400: 61 SCB 3 - C
12	5.8 gal Zn	970: 1955 EN 2	25	Cu65Zn	1400: 61 SCB 3 - C
13	5.8 gal Zn	970: 1955 EN 2	26	Perburan	Perburan

# RÜCKSCHLAGKLAPPE

Type 5/260

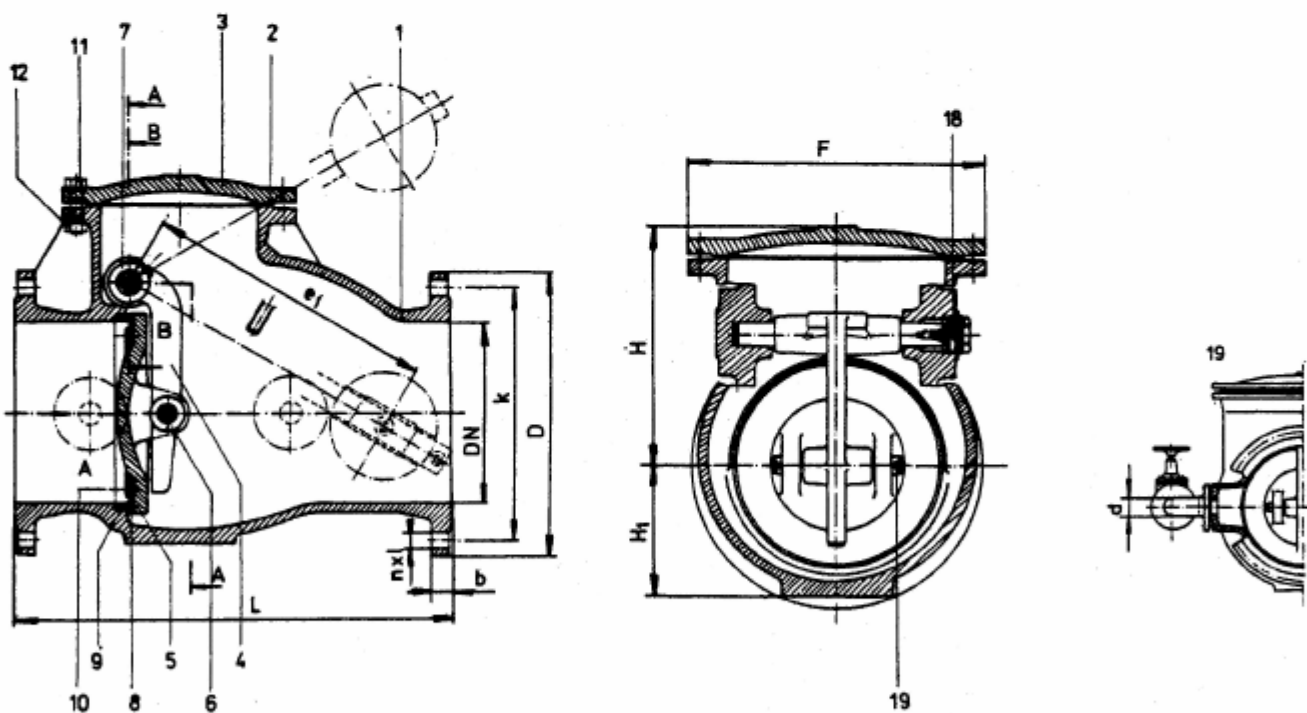
# SWING CHECK VALVE

Abmessungen/Dimensions

PN 10/16

DN	L	H	H <sub>1</sub>	F	PN10				PN16				d	e <sub>1</sub>	Gew. [kg]
					D	k	n	l	D	k	n	l			
50	200	130	60	125	165	125	4	18	165	125	4	18	15	155	17
65	240	155	65	190	185	145	4	18	185	145	4	18	15	175	28
80	260	170	75	210	200	160	4	18	200	160	8	18	15	175	30
100	300	200	95	230	220	180	8	18	220	180	8	18	15	195	38
125	350	225	110	270	250	210	8	18	250	210	8	18	15	225	54
150	400	240	120	310	285	240	8	23	285	240	8	23	15	240	71
175	450	260	135	330	315	270	8	23	315	270	8	23	15	260	95
200	500	280	155	370	340	295	8	23	340	295	12	23	25	290	125
250	600	330	180	425	395	350	12	23					25	300	160
300	700	360	200	490	445	400	12	23					25	325	210
350	800	410	260	550	505	460	16	23					25	498	355
400	900	450	290	620	565	515	16	27					25	567	470

n Anzahl der Flanschbohrungen/Number of flange holes



### Einsatzgrenzen und Prüfdruck/Rating and test pressure

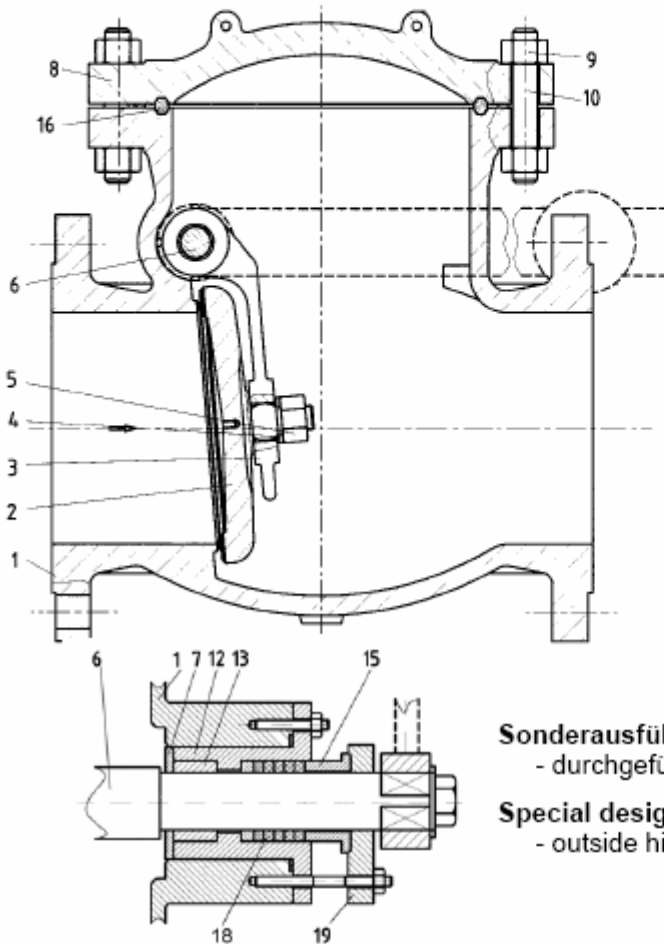
DN ND	PN NP	Flansche Flanges DIN 2501	Prüfdruck/Test pressure [bar]		max. zul. Arbeitsdruck [bar] max. working pressure [bar]	
			Gehäuse Body	im Abschluß Closed	80°C	200°C
50 - 200	10	10	16	10	10	-
250 - 300	8	10	16	8	8	-
350 - 400	6	10	16	6	6	-
50 - 200	16	16	25	16	16	13
250 - 300	10	10	16	10	10	8
350 - 400	8	10	13	8	8	6

# RÜCKSCHLAGKLAPPE

TYPE 5/500

# SWING CHECK VALVE

PN16-250



### Ausführung:

- Baulängen nach DIN3202 und EN558-1.

### Anwendung:

- für flüssige und gasförmige Medien.
- Einsatzgrenzen nach DIN2401.

### Anschluss:

- Flanschen nach DIN2501.
- Schweißenden nach DIN3239-T1.

### Design:

- face to face dimension acc. DIN3202 and EN558-1.

### Application:

- for liquid and gaseous media
- pressure-temperature rating acc. DIN2401.

### Connection:

- flanges acc. DIN2501
- butt welding ends DIN3239-T1.

### Sonderausführung:

- durchgeführte Klappenwelle mit Hebel und Gewicht

### Special design:

- outside hinge pin with lever and counter-weight

## Werkstoffe / Materials

Pos.	Benennung	Designation	Option / option		
			standard	-30°C ÷ 550°C	-45°C ÷ 345°C
1	Gehäuse	body	GP240GH	G17CrMo9-10	G18Mo5
2	Klappenscheibe	disc	GP240GH	G17CrMo9-10	G18Mo5
3	Hebel	hinge	GP240GH	G17CrMo9-10	G18Mo5
4	Distanzstück	spacer	St37 – 3N	10CrMo9-10	15Mo3
5	Klappenmutter	disc nut	Ck25	24CrMoV-55	24CrMo5
6	Klappenwelle	hinge pin	X10Cr13	X10CrNiMoTi18.9	X10CrNiTi18.9
8	Deckel	bonnet	GP240GH	G17CrMo9-10	G18Mo5
9	Schraube	stud	42CrMo4	24CrMoV-55	42CrMo4
10	Mutter	nut	Ck45	24CrMoV-55	24CrMo5
12	Buchse	bushing	Ck25	10CrMo9-10	15Mo3
13	Lagerbuchse	bearing bushing	A439-D2c	A439-D2c	A439-D2c
15	Stopfbuchse	gland	15Mo3	10CrMo9-10	15Mo3
16	Dichtung	gasket	Stahl / steel	Stahl / steel	Stahl / steel
18	Packung	packing	Grafit / graphite	Grafit / graphite	Grafit / graphite
19	Stopfbuchsbrille	gland flange	Ck25	Ck25	Ck25
22	Gewichtshebel	lever with weight	Stahl / steel	Stahl / steel	Stahl / steel





# RÜCKSCHLAGKLAPPE

Zwischenflanschausführung

# BUTTERFLY CHECK VALVE

wafer type

TYPE 5/067

PN16-100

## Ausführung:

- Zwischenflansch
- exzentrisch geführte Klappenwelle
- mit oder ohne Federbelastung.

## Anwendung:

- vorwiegend für flüssige Medien
- Einsatzgrenzen nach DIN2401.

## Anschluss:

- Einbau zwischen den Flanschen nach DIN.

## Design:

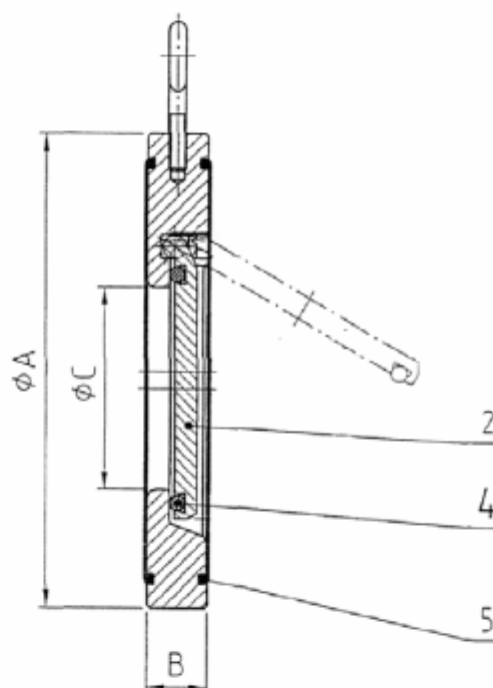
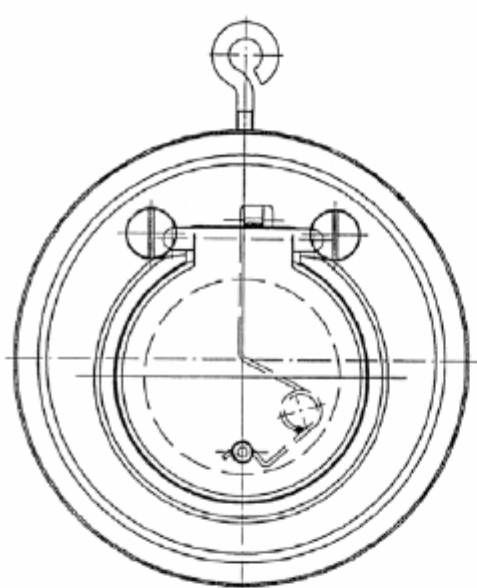
- wafer type
- eccentric directed pin
- with or without spring loading.

## Application:

- mostly for liquid media
- rating acc. DIN2401.

## Connection:

- mounting between flanges acc. DIN.



Abmessungen / dimensions

DN	C	PN16		PN25/40		PN63		PN100	
		B	A	B	A	B	A	B	A
32	18	15	85	-	-	-	-	-	-
40	22	16	95	-	-	-	-	-	-
50	32	14	109	14	109	22	115	22	121
65	40	14	129	14	129	22	140	22	146
80	54	14	144	14	144	22	150	22	156
100	70	18	164	22	170	24	176	24	183
125	92	18	195	23	198	26	213	28	220
150	112	20	220	24	228	26	250	30	260
200	154	22	275	30	293	33	312	39	327

# RÜCKSCHLAGKLAPPE

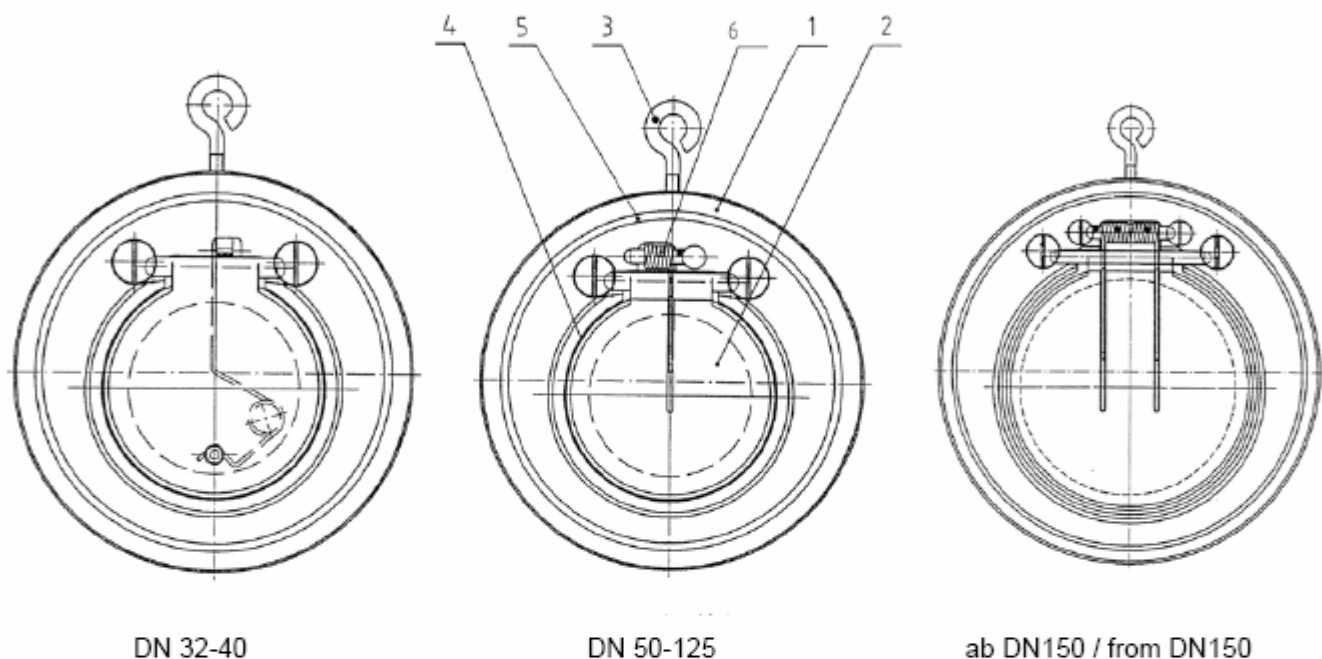
Zwischenflanschausführung

# BUTTERFLY CHECK VALVE

wafer type

TYPE 5/067

PN16-100



Werkstoffe / Materials			
Pos.	Benennung	Designation	Werkstoff / material
1	Gehäuse	body	Stahl, Edelstahl – 1.4571, Aluminium, Alu-Bronze steel, stainless steel AISI 316 Ti, aluminium, al-brass
2	Scheibe	disc	Stahl, Edelstahl - 1.4581, Aluminium, Alu-Bronze steel, stainless steel – AISI 316Ti, aluminium, al-brass
3	Augenschraube	eyebolt	Stahl / steel
4	O-Ring (Scheibe)	O-ring (disc)	NBR70, EPDM, VITON, PTFE
5	O-Ring (Gehäuse)	O-ring (body)	NBR70, EPDM, VITON, PTFE
6	Feder	spring	Edelstahl 1.4571 / stainless steel AISI 316 Ti